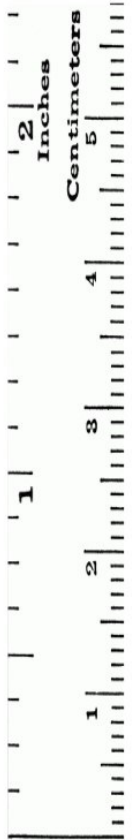


# Exploring What's Inside A Seed



Soak several lima beans for a few hours, save a few dry ones too!



## Making Observations

What does the dry seed look like?

---

---

How big is the dry seed? Trace the seed next to the ruler.

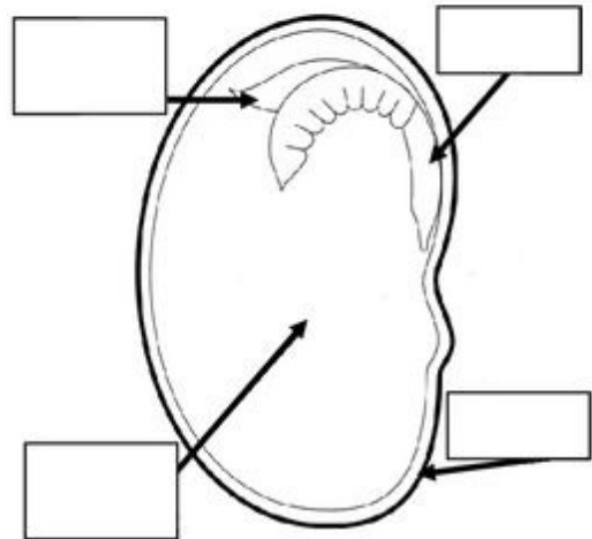
Now let's take a look at your seed that has been soaked. Split the seed in half. What does it look like on the inside? Look for the tiny new plant called the embryo.

How is the wet seed different from the dry seed?

---

---

---



Can you find all of the parts of the seed when you split it open?

Label the seed parts on the diagram.

**Seed coat, first leaves, food storage, embryonic root**

## Follow Up Activity: If I were a Seed...

**Topic:** Imagine you are a seed and write a short poem about a day in your life.

**Word Bank:** Words that are important when you write about this topic.

**Main Ideas:** List at least three ideas that are important to telling about your topic. Describe the activities you did to learn about this topic.

---

---

---

---

---